

FINANCES

RECEIPTS	2017	2018
Grants	\$503,637	\$778,510
Contributions	\$21,861	\$34,351
Fundraisers	\$74,773	\$132,248
Total	\$600,271	\$945,109

EXPENDITURES	2017	2018
Program Expenses	\$351,011	\$842,445
Operating Expenses	\$75,041	\$75,979
Fundraising	\$14,202	\$18,375
Total	\$314,943	\$936,800

Volunteer Hours: Over 125 Individuals donated more than 3,000 hours of volunteer services



P.O. Box 1505 • Jefferson City, Missouri 65102 • 573-298-0258 • www.mofosteradopt.com

Board of Directors 2017-2018

Carol Fischer, Chair | Retired, Deputy Secretary of State
Kirk Duncan, Vice Chair | Williams-Keepers, LLC
Christopher Leuckel, Treasurer
Tisha Spencer, Secretary | Firehouse Design
Linette Sommerer | Central Bank
Michael McCoy | Central Bank
Scott Hamblin | Brydon, Swearingen & England, PC
Carlos Graham | Lincoln University
Joy Sweeney | Council for Drug Free Youth
Christopher Leuckel | All State Insurance
Hedi Lucas | Missouri Nurses Association
Sheri Phillips | Harper, Evans, Wade & Netemeyer
Josh Varner | Helias Catholic School
Cheryl Jones | Lincoln University
Darin Keim | Big Surf Waterpark- *thank you for your service!*
Larry Lambert | Missouri Employers Mutual- *thank you for your service!*

CMFCAA Staff

DeAnna Alonso, President/CEO
Tammy Rodgers, Chief Financial Officer
Sarah Bashore, Chief Program Officer
Jessica Taylor, Chief Operating Officer
Jennifer Perkins, Direct Services Supervisor
Carol Montie, Family Development Supervisor
Christal Jones, Extreme Recruiter® Specialist
Jason Evans, Extreme Recruitment® Investigator
Jessica Williams, 30 Day to Family® Specialist
Mary Rohrbach, Family Development Trainer
Lorenzo Scott, Family Development Trainer

Thank you to to all the AmericorpVISTAS for your services to CMFCAA!

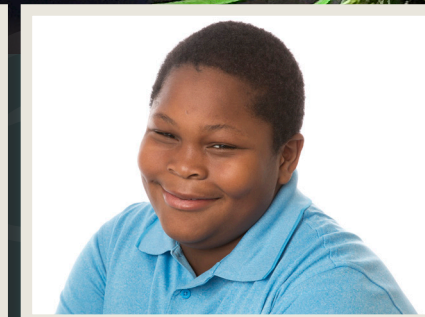
Membership Agencies:



CMFCAA
P.O. Box 1505
Jefferson City, MO 65102

place
postage
here

Annual Report 2018





Dawn Hart
Volunteer

Dawn Hart has been an absolute blessing to CMFCAA this year. She volunteered numerous hours to help with the Operation Brace Youth Life Skills Retreat, the 10th Annual Gala and continues to serve as a mentor in our Transitions program to one of our high school seniors.

"I love volunteering for CMFCAA because I owe it to the next generation to walk them through the struggles I've overcome. I enjoy helping the older youth with their journey into the workforce. These kids are growing up in front of the communities' eyes. There is a need for help whether it's being a foster parent, financially there to help the organization, or to be an advocate. It simply comes down to the need. I was absolutely shocked at the need, and taken back by their stories. I never thought these stories were happening right here in our community."

2018 Community Program Partnerships

ABLE	Every Child's Hope	Missouri Children's Division
Amy Knollmeyer, Photographer	Great Circle	Missouri Dept of Transportation
Avail Salon	Heart of Missouri CASA	Pathways
Boone County Juvenile Office	Heart of Missouri United Way	Retroplex- Waynesville
Big Surf Water Park	Jefferson City Independent School District	Runge Nature Center
Capital City CASA	Lincoln University	Storage Mart
Capital City Diaper Bank	Lincoln University Farmers Market	The Salvation Army
Capital City Farmer's Market	Memorial Baptist Church, Jefferson City	Tri-County YMCA
Columbia Activities and Recreation Center	Missouri Air National Guard 131st Bomb Wing	Trinity Lutheran Church, Jefferson City
Corporation for National Community Service- Americorp VISTA	Missouri Alliance for Children and Families	University of Missouri, MU Serves

2018 Major Financial Donors

Ameren MO Donation	Gary and Millie Schell	Point View Resort
Bartlett & West	Heart of Missouri United Way	Robert and Sally Robuck
Boone County	Home State Health	Scholastic, Inc.
Call & Gentry Law Group, LLC	Karl Kramer	Scott Hamblin, Attorney at Law
Callaway County United Way	Kids First Optimist Club	Southwest Animal Hospital
Chris Leuckel	Lee's Chicken/Fischer Family	St. Paul's Evangelical Church
Classic Buildings, LLC	Luebbering Insurance Agency, LLC	Starbucks Coffee Company
Community Foundation of Central Missouri	Magical Smiles	State of Missouri
Cornerstone Baptist Church	Memorial Baptist Church	Storage Mart
Diamond Pet Foods	MFA Oil	The Alex Smith Foundations
Dollar General Distribution Center	Michael and Marcia McCoy	United Way of Central Missouri
Enterprise Holdings Foundation	Missouri Employer's Mutual	Veterans United Foundation
Eurofins/ABC Labs	Modern Litho	Vincent Hartman
Firehouse Design	New Chapter Coaching, LLC	United Way of Central Missouri
Friends of Foster Children	Oscar's Classic Diner	Vincent Hartman

twelve for 12th DONORS

Jessica Allison	Diana Luebbering	Jerry & Tammy Rodgers
DeAnna Alonso	Kate Mclwain	Mary Rohrback
Sarah Bashore	Emily Mebruer	Angela Sherman
Stuart & Roberta Dunkel	Carol Montie	Lora Snyder
Bill Early	Daniel & Lora Morrow	Jessica Taylor
Jason Evans	Laura Nelson	Mark & Amanda Towns
Kay Evans	Dawn Overby	Josh Varner
Carol Fischer	Sheri Phillips	Jessica Williams
Chris Leuckel	Jennifer Perkins	



2018 At a glance

PROGRAM STATS:

Direct Services

- 228 Begin Again backpacks distributed
- 8924 Hours of respite received
- 108 Youth served in Transitions Program
- 694 Clients served by other direct services

Family Development Program (First Year Program):

- 147 Individuals trained
- 20 Home assessments completed
- 19 License ready families referred to local agencies

Family Finding Program (First Year Program):

- 21 Youth served
- 42 Courtesy family finding searches completed



"We got our kids and found our forever family!"

Samantha & Travis Green



"I don't feel alone in the world anymore."

- Ryan, after receiving a letter from an uncle he had never met.



"I cannot believe how quickly I fell in love with them, it was right away.

They already asked if they could call me MOM. My heart is melted. Thank you so much for everything."

- Adoptive Parent

Accepted 30 Days to Family @ case*

Educational Event Dr. Monique Mitchell in Columbia. In partnership with MoDot Highway Safety*

STARS @ Class Graduation*

Spaulding Class Graduation*

CMFCAA Concert Fundraiser @ Ozarks Amphitheater*

Received United Way Community Impact Grant for Case Management Database

CMFCAA 10th Birthday

Shine a Light for Adoption @ Linn Community Church*

Holiday Parties @ Bonkers, 54 Country, Retroplex, Old Kinderhook, Memorial Baptist

Teen US Ambassadors Youth Service Project with First Lady

Accepted Extreme Recruitment @ case* Showing of Paper Tigers movie at the Blue Note

Foster Parent Appreciation @ Glenn Acres Farm

CMFCAA Day @ Big Surf Waterpark

Became a Heart of Missouri United Way funded Agency*

Boone County Office Ribbon Cutting* Showing of Paper Tigers movie in Camdenon

10th Annual Gala Ashley Rhoades Couter - keynote speaker

Adoption Proclamation signed by Governor Instant Family Movie Awareness Event

*CMFCAA Firsts